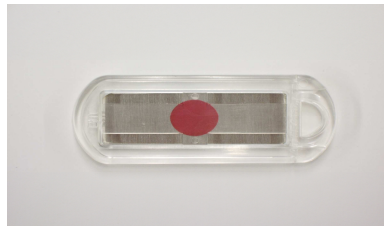


EVIT TTDF

The recent technical development of the health care instruments has brought new challenges to the cleaning assurance. There is not always certainty of suitability of the cleaning methods/programs/detergents for each type of instruments. Control of the cleaning processes is therefore very important because in the later phases of CSSD process the cleaning result affects to the success of disinfection and sterilization. Cleaning is important particularly in the automatic washing machines. The process parameters of them are well controlled indeed, but the final cleaning result, which highly depends on the non-controlled factors, is not controlled at all. Washing efficacy is influenced by the detergent, water temperature, time and penetration of the wash shower. Good cleaning result is achieved by the right combination of these variables.

EVIT TTDF is a new type of washing indicator by which the cleaning result of the automatic washing/disinfection machines can be controlled. EVIT TTDF- controls the efficacy of the water shower, washing temperature and detergent quality and dosage (TTDF = Time, Temperature, Detergent and Flow)



Product data:

- Reveals defects and inefficacy of the washing process
- Easy to use, includes both the test indicator and the PCD
- Easy recording
- Suits for detergent and washing machine comparison

The test contaminant consists of blood cells of animal and albumin. Additionally it contains Extra Cellular Matrix (ECM) to keep the mixture combined and fixed to the stainless steel plate. The contaminant complies to the requirements of ISO 15883. It corresponds very well the typical type of instrument contamination.

Packing:

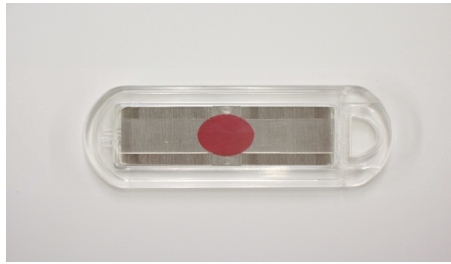
- Starter kit: 20 test indicators with PCD + a stainless steel holder
- Repeat kit: 24 test indicators with PCD
- Each single indicator is packed in the aluminum foil bag

USAGE

- 1) Place the holder to the washing basket. Define the location on the basis of the water nozzles and direction of showers. Use always the same location. Then, during the time, you'll easily notice the differences between the individual tests. Fix the holder well to the basket.
- 2) Remove EVIT TTDF—indicator system (=indicator plate with PCD) from the aluminum foil bag and place it to the holder so that the indicator spot is reachable by the water flow.
- 3) Run the normal washing cycle
- 4) Remove the indicator system from the holder. Remove the indicator plate from the PCD.
- 5) Evaluate the test spot according to the instructions. In the unclear case, repeat the test.
- 6) Dry the indicator plate carefully and record it as quality document

Patent pending

INTERPRETATION OF EVIT TTDF



1. Original



2. Test approved



3. Lack or missing detergent or detergent not suitable



4. Temperature too low or inefficient water penetration/flow